

[View this email in your browser](#)



Friends of Whitman Music

Supporting the Whitman Middle School Music Program



Friends of Whitman Music January News

Upcoming Performances and Events

- **Saturday, January 27:** Elementary Instrumental Music (EIM) Day at Whitman, 12:30-5:30 pm
- **Wednesday, January 31:** Ballard High School Pizza & Pep Night for Whitman Band 8th Graders, 5:30-8:30 pm
- **Monday, February 12:** FOWM Monthly Meeting, 6:30-8:30 pm
- **Friday, March 15:** Concert Orchestra Trip to WWU, 8:45 am-10 pm
- **Monday, March 18:** FOWM Monthly Meeting, 6:30-8:30 pm
- **Tuesday, March 19:** Introductory & Concert Orchestra Concert, 6:00 pm
- **Tuesday, March 26:** Introductory, Intermediate, Concert & Jazz Band Concert, 6:00 pm

For a comprehensive calendar of events, click [here for a list](#) or click [here for a monthly calendar format](#).

For more information, check out the FOWM website at <https://fowmusic.org/>.

In this month's newsletter:

[Whitman Music Program News](#) [Elementary Instrumental Music \(EIM\) Day](#)
[Volunteer Opportunities](#) ["Pizza & Pep" Night](#) [FOWM Board Recruitment](#)
[Fundraising Update](#) ["Music in our Schools"](#)

Ms. Gunn's Whitman Music Program News



We enjoyed a festive concert season in December and hope you were able to join us for some of the amazing performances! We are hard at work learning new pieces for our March concerts, getting ready to support Elementary School music performers later in January, and planning fun events for March which is "Music in our Schools" month. Read on below for more details, and thanks for your continued support of our musicians and our music programs!

We have a new YouTube page where concert videos are posted! Find our "Whitmanmsmusic" channel at [this link](#) to view the videos yourself, or to share the link with out-of-town family who want to see your musician's group in action. Special call out to WMS Music parent Sue Tarazi who helped us get the page setup and posted the videos. Right now our Pops Concert from November is added (along with some concerts from the 22-23 school year), and we hope to have the recent winter concerts added soon as well.

Don't forget to follow [Whitman Music Program on Instagram](#).

Elementary Instrumental Music (EIM) Day: Saturday, January 27

Here's everything you need to know about **EIM Day on Saturday, January 27:**

What: Students enrolled in the Elementary Instrumental Music programs at Adams, North Beach, Loyal Heights, Viewlands, and Whittier Elementary Schools are invited to Whitman Middle School for a free day of learning and making music, including a side-by-side concert with our Whitman musicians at the end of the day!

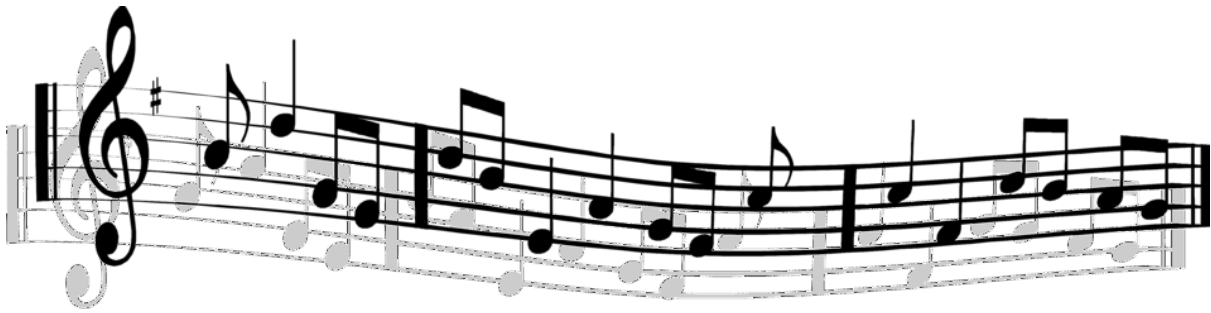
Over 60 Whitman musicians are also volunteering their time to assist throughout the day's events which include sectionals, rehearsals, and recitals - and the concert. This day is a great motivator to these Elementary School musicians that shows them how fun music can be, and gives them over a month's worth of lessons in just a single afternoon!

When:

- EIM events run from 1:00-4:30 pm
- Concert begins at 5:00 pm in the Auditorium (warm-up at 4:30)
- Bake Sale precedes the concert starting at 4:30 pm in the Main Hallway

Actions:

1. **Whitman Student Volunteers:** Families of students who are on the volunteer list to assist received an e-mail from Ms. Gunn on January 17th with details. Please review the message and attached schedules and confirm asap with a reply that your student can attend as noted.
2. **Whitman Community Volunteers:** [This is a major event, and community volunteers are needed.](#) Click [here](#) for our "rolling" volunteer sign-up list which includes roles needed to pull off EIM Day. Many hands make the work light! If your student is volunteering, you can join too!
3. **Have Younger Musicians?** If you have 4th or 5th grade students in the music programs at the schools listed above, consider signing them up to join. Registration forms were already sent by Elementary Instrumental Music Teachers but you can also use [this online form](#) to register, or print, complete, and return [this form](#) to your elementary school. RSVPs are strongly encouraged to help with our planning, but not required.
4. **Concert:** Attend the Concert where our Whitman musicians will join the Elementary students - 5:00 pm in our Auditorium (estimated duration: 30 minutes). If you come, bring cash for the Bake Sale to support our music programs, which starts at 4:30 pm.
5. **Bake Sale Goodies:** Sign up [here](#) to bring home-baked or store-bought treats for the Bake Sale. Send with your student volunteer that day, or drop off in the Whitman Main Hallway near the Main Office anytime between 1:00-4 pm.



Current Volunteer Opportunities

There are many opportunities (big and small) to help support our music programs:

Our "rolling" sign-up list for all active volunteer opportunities is [here](#) - and the list is kept updated with new opportunities when they arise. Join us to support Whitman Music events...the more, the merrier!

The most pressing needs we have to fill include:

- EIM Day - Saturday 1/27: [multiple roles and time slots available](#). **If your student is volunteering at EIM day, you can join them too!
- WWU Concert Orchestra Festival - [Friday 3/15: all day trip to Bellingham and back](#) (8:45 am - 9-ish pm)



Ballard High School "Pizza & Pep" Night

8th Grade Band Musicians are invited to join for a fun night performing with the Ballard High School pep band on **Wednesday, January 31 from 5:30 - 8:30 pm**. See below for details. *Pro tip:* if your musician is sensitive to noise, have them bring earplugs to help. **BRING YOUR INSTRUMENTS!!!**

Location: Ballard High School gymnasium

Timing:

5:30-6:15 – Learn Ballard High School pep songs with the band!

6:15-7:00 – Eat Lots of Pizza!

7:00+ Perform at the Ballard Girls Varsity Game with the Ballard Pep Band!

Come for some or all of the fun!

No worries if you have to leave early or show up late!

FOWM Board Recruitment

We are already beginning to recruit for 2024-25 FOWM Board positions.

Our President and Treasurer officer positions will open up, and other roles will be available too. We've loved having so many new members join the Board this year and having new community members help with key activities throughout the year to support our music programs.

If you're interested in learning more or potentially taking on a Board role, please contact us at friendsofwhitmanmiddlemusic@gmail.com. Join now and shadow with an existing Officer/Board Member during this year to learn the ropes and ramp up. Come join us and help support the amazing music programs at Whitman!

FOWM Fundraising

First-half fundraising progress: Thanks to your generosity, the start of the school year resulted in success for our fundraising efforts across the board.

These funds enable us to invest in the activities and needs of our music programs and musicians. As a special call-out, we met our goal to "replace the bass" through the Nov/Dec concert bake sales, especially given the help from a generous anonymous donor. Thanks to everyone who participated in helping us meet our goal!

It has been encouraging to see many more families in person at our events, and we are especially thankful for the partnership with our local businesses. Special shout out to Whitman music parents, Jeremy and Molly Johnson, as well as Mark and Joanna Silverstein for hosting the fundraiser at Wheelie Pop!

Save these dates for more opportunities to support our music program in the coming months:

- Elementary Instrumental Music Day (EIM) bake sale: Saturday, January 27 @ Whitman MS
- Practice-a-Thon (Our Biggest Fundraiser of the year!): Month of March - more details to come!
- Goodwill Truck: Sunday, April 21 @ Whitman MS Parking Lot, 9am-12pm
- Mattress Sale: Sunday, May 5 @ Ballard High School (time TBD)

Donate today! Donations to Friends of Whitman Music (11514) through the Alliance for Education are tax-deductible. Please be sure to select **our organization from the drop-down menu**. You can [donate money to our music program by visiting our website](#).

For company matching funds: Alliance for Education is our fiscal sponsor and a matching fund from your company will need to go through them. PLEASE make sure you and your company designate the match to go to Friends of Whitman Music (Account #11514), so the match can be deposited to benefit our program. The contact at Alliance for Education that can help you or your company match is Sanya Hussain at Sanya@alliance4ed.org. For additional help, please contact our treasurer at fowmtreasurerwms@gmail.com.

Donate Today



"Music in our Schools" month: March

March is "Music in our Schools" month and we will have a variety of activities to celebrate! More information to come, but we're highlighting a few key events now to raise your awareness. Stay tuned for more updates in the weeks ahead!

- Practice-a-thon fundraiser for all musicians
- Spirit Week with music-related themes
- Concerts (and bake sales!!):
 - Introductory & Concert Orchestras - Tuesday, March 19, 6pm
 - Introductory, Intermediate, Concert & Jazz Bands - Tuesday, March 26, 6pm

Whitman Music Program Amazon Wishlist



Whitman music program has a wishlist on Amazon for families that shop there. Purchases will ship directly to Ms. Gunn at Whitman and help students succeed in their music practice!

[Whitman Music Wishlist](#)

About the Friends of Whitman Music

Friends of Whitman Music is a parent-run group that works closely with music staff and school administration to provide support to the Whitman Music program, both financially through fundraising efforts and with coordinating volunteer help throughout the school year.

We meet monthly to check in with Ms. Gunn and discuss opportunities for us to help with various activities and fundraising throughout the year. All are welcome to join at these meetings, which will be held typically once a month.

Email us with any questions friendsofwhitmanmiddlemusic@gmail.com.

Donate to Whitman Music (Alliance4Ed acct #11514)

2023-24 FOWM Committee

Alexis Cruikshank, President
Jan Johnson, Treasurer
Jen Sullivan, Secretary
Lyla Ross, Fundraising Chair
Katie Sachter, Volunteer Coordinator
Todd Vician, Communications Lead
Kevin Emerson, Drumline Representative

Whitman Middle School Music Program Director/Teacher: Ms. Melanie Gunn magunn@seattleschools.org
Jazz Band Teacher: Audrey Stangland

Follow the [Whitman Music Program on Instagram](#)

[Visit the FOWM website](#)

Copyright © 2024 Friends of Whitman Music, All rights reserved.

Want to change how you receive these emails?
You can [update your preferences](#) or [unsubscribe from this list](#).

