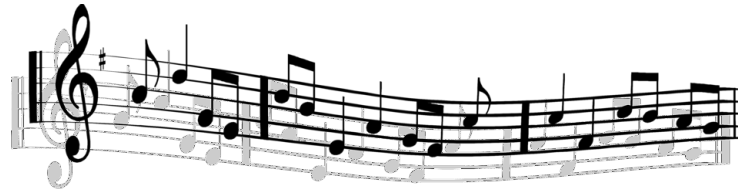


[View this email in your browser](#)



Friends of Whitman Music

Supporting the Whitman Middle School Music Program



Friends of Whitman Music September Newsletter

Upcoming Performances and Music Events

- Nov. 14: Pops Concert, Intermediate/Concert level groups, 6:00 pm
- Dec. 6: Jazz Band at Wheelie Pop, 6:00 pm
- Dec. 7: Intro Groups "Informance," 6:00 pm
- Dec. 12: Winter Holiday Concert, Intermediate/Concert level groups, 6:00 pm

Upcoming FOWM Events

- Oct. 17: FOWM Meeting, 6:30 pm
- Oct. 19: MOD Pizza Fundraiser, all day
- Nov. 21: FOWM Meeting, 6:30 pm
- Dec. 11: FOWM Meeting, 6:30 pm

Ms. Gunn's Whitman Music Program News



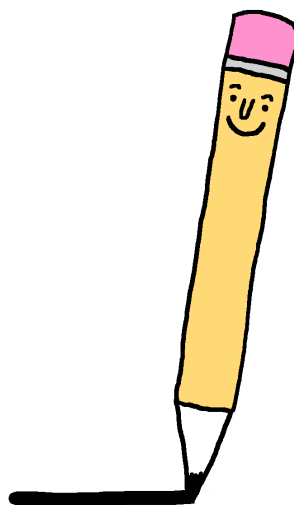
The school year is off to a great start! Students are learning new music for upcoming performances and have started practice logs.

Check out Ms.Gunn's [September 2023 Newsletter](#).

Don't forget to follow [Whitman Music Program on Instagram](#).

Band and Orchestra Supplies

This is a reminder that all students need a **1-inch 3-ring black binder and pencils** for class each day. Check your email for additional supply information, sent by Ms. Gunn last week.



MOD Pizza Night on October 19

Join us for a back to school fundraiser at MOD Pizza on Thursday, October 19.

Come out to MOD Pizza in Ballard to help support the Whitman Music Program! MOD is donating 20% of the price of your meal to the program all day long. MOD Pizza is open 10:30 am - 10:00 pm.

How to Participate:

- **Visit in person** at MOD Pizza and mention the fundraiser “Friends of Whitman Music” at checkout. Location: 6010 15th Ave NW Seattle, WA 98107
- **Order online** at [modpizza.com](https://www.modpizza.com) or with the MOD app and apply the Whitman Music fundraiser digital code MODGIVES20.



Thank you for supporting the Whitman Music Program!

Shop for Winter Greenery



WREATH & DECOR FUNDRAISER



Purchase beautiful fresh wreaths and other decor from Lynch Creek Farm. Proceeds will support our music programs at Whitman Middle School!

Items can be ordered for immediate delivery or pre-ordered for the winter season, and can be shipped nationwide! Be sure to use the link or code below.

www.lynchcreekfundraising.com/c/300805



FOWM Fundraising

Your generous financial support makes the Whitman Music Program possible. Donated funds support the purchase of new instruments, specialized coaching in all areas, and more. We've raised over \$12,000, which represents 39% of our fundraising goal for the year. Thank you for helping us start strong!

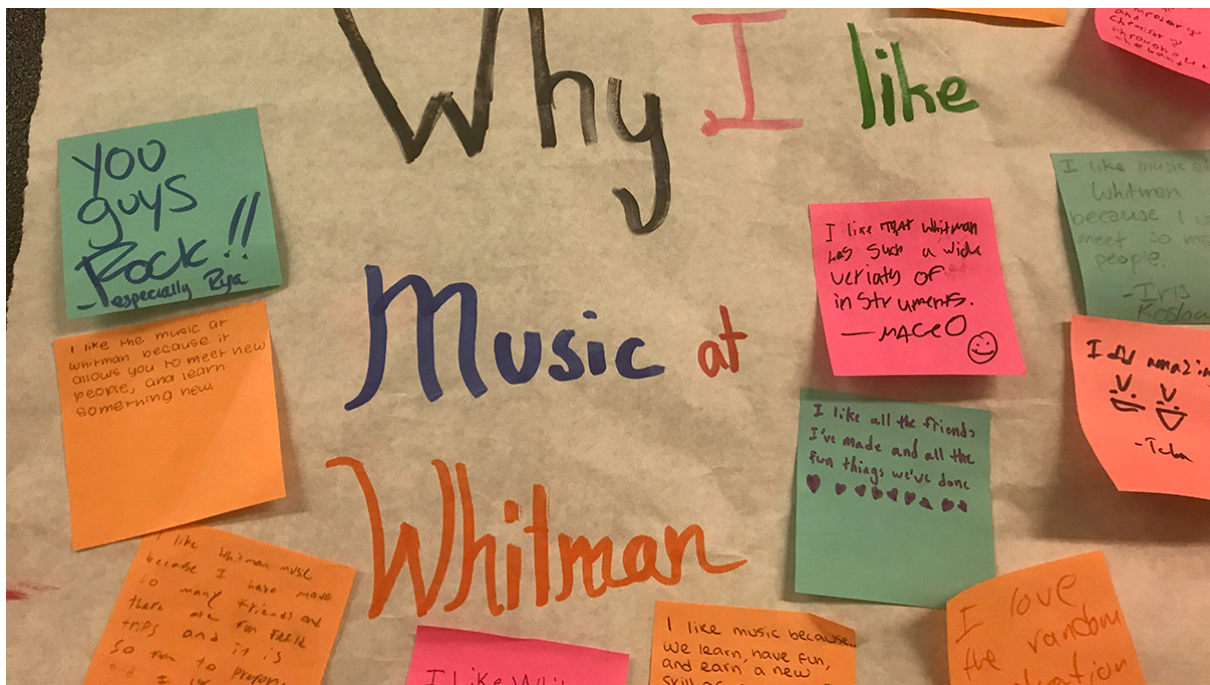
Donate today! Donations to Friends of Whitman Music (11514) through the Alliance for Education are tax-deductible. Please be sure to select **our organization from the drop-down menu**. You can [donate money to our music program by visiting our website](#).

For company matching funds: Alliance for Education is our fiscal sponsor and a matching fund from your company will need to go through them. PLEASE make sure you and your company designate the match to go to Friends of Whitman Music (Account #11514), so the match can be deposited to benefit our program. The contact at Alliance for Education that can help you or your company match is Sanya Hussain at Sanya@alliance4ed.org. For additional help, please contact our treasurer at fowmtreasurerwms@gmail.com.

[Donate Today](#)

Volunteer with Us

Check out the [Whitman Music Volunteer Sign Up](#) to help with an upcoming performance. We're also looking for support to assemble remaining instrument lockers, chaperone 2023-24 student field trips, and potentially work with Ms. Gunn on special lighting for the Pops Concert in November. Email friendsofwhitmanmiddlemusic@gmail.com to learn more.



New FOWM Website

Check out our [new website](#) that launched with the school year - it's another handy source for helpful information including a calendar of upcoming events, and information about ways to support the Whitman Middle School music programs and musicians. Bookmark or favorite it now in your browsers and mobile device so you have easy access to all the latest information.



Help Support Whitman Music Students

Join the Friends of Whitman Music

We are still recruiting for 2023-24 Friends of Whitman Music positions, and we need your help. This is your opportunity to make a positive impact on the Whitman Music Program!

Friends of Whitman Music is currently seeking a fundraising lead.

The FOWM fundraising chair helps to staff and oversee our fundraising endeavors and explore new fundraising opportunities for FOWM.

They will work with the president and treasurer to make sure fundraising expectations are reasonable and appropriate for our group and that we are in alignment with the Whitman Music calendar.

If you're interested in learning more, send an email to friendsofwhitmanmiddlemusic@gmail.com.

Whitman Music Program Amazon Wishlist



Whitman music program has a wishlist on Amazon for families that shop there. Purchases will ship directly to Ms. Gunn at Whitman and help students succeed in their music practice!

[Whitman Music Wishlist](#)

A solid yellow horizontal bar at the bottom of the page.

About the Friends of Whitman Music

Friends of Whitman Music is a parent-run group that works closely with music staff and school administration to provide support to the Whitman Music program, both financially through fundraising efforts and with coordinating volunteer help throughout the school year.

We meet monthly to check in with Ms. Gunn and discuss opportunities for us to help with various activities and fundraising throughout the year. All are welcome to join at these meetings, which will be held typically once a month.

Email us with any questions friendsofwhitmanmiddlemusic@gmail.com.

Donate to Whitman Music (Alliance4Ed acct #11514)

2023-24 FOWM Committee

Alexis Cruikshank, President
Jan Johnson, Treasurer
Jen Sullivan, Secretary
Katie Sachter, Volunteer Coordinator
Todd Vician, Communications Lead
Kevin Emerson, Drumline Lead

Whitman Middle School Music Program Director/Teacher: Ms. Melanie Gunn magunn@seattleschools.org

Follow the [Whitman Music Program on Instagram](#)

[Visit the FOWM website](#)

Copyright © 2023 Friends of Whitman Music, All rights reserved.

Want to change how you receive these emails?
You can [update your preferences](#) or [unsubscribe from this list](#).

