

Subscribe

Past Issues

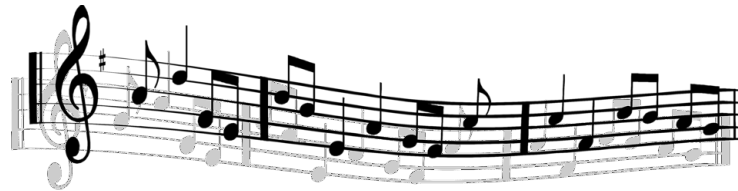
Translate ▼

[View this email in your browser](#)



# Friends of Whitman Music

*Supporting the Whitman Middle School Music Program*



## Friends of Whitman Music October Newsletter

### Upcoming Performances and Music Events

- Nov. 14: Pops Concert, Intermediate/Concert level groups, 6:00 pm
- Dec. 6: Jazz Band at Wheelie Pop, 6:00 pm
- Dec. 7: Intro Groups "Informance", 6:00 pm
- Dec. 12: Winter Holiday Concert, Intermediate/Concert level groups, 6:00 pm

### Upcoming FOWM Events

- Nov. 21: FOWM Meeting, 6:30 pm
- Dec. 11: FOWM Meeting, 6:30 pm

## Ms. Gunn's Whitman Music Program News



We are settling into class routines and practicing music for our upcoming performances in November and December. It was great to see so many families at Curriculum Night!

Check out Ms.Gunn's [October 2023 Newsletter](#) for more updates.

Don't forget to follow [Whitman Music Program on Instagram](#).

---

## Band and Orchestra Supplies

This is a reminder that all students need a **1-inch 3-ring black binder and pencils** for class each day. Thanks for your help to ensure your student has the supplies to stay organized.



---

## MOD Pizza Night - THANK YOU!

Thank you for your generous support of Whitman Music Programs via the fundraiser at MOD Pizza on Thursday, October 19! MOD Pizza donated 20% of the orders from our Friends of Whitman Music community, which totaled just over \$600.

We appreciate your support - and it was great to see so many Whitman families at the event - we hope that you enjoyed some tasty pizza too!



---

Shop for Fall & Winter Greenery



## WREATH & DECOR FUNDRAISER



Purchase beautiful fresh wreaths and other decor from Lynch Creek Farm. Proceeds will support our music programs at Whitman Middle School!

Items can be ordered for immediate delivery or pre-ordered for the winter season, and can be shipped nationwide! Be sure to use the link or code below.

[www.lynchcreekfundraising.com/c/300805](http://www.lynchcreekfundraising.com/c/300805)





## FOWM Fundraising

Your generous financial support makes the Whitman Music Program possible. Donated funds support the purchase of new instruments, specialized coaching in all areas, and more. We've raised over \$12,000, which represents 39% of our fundraising goal for the year. Thank you for helping us start strong!

**Donate today!** Donations to Friends of Whitman Music (11514) through the Alliance for Education are tax-deductible. Please be sure to select **our organization from the drop-down menu**. You can [donate money to our music program by visiting our website](#).

**For company matching funds:** Alliance for Education is our fiscal sponsor and a matching fund from your company will need to go through them. PLEASE make sure you and your company designate the match to go to Friends of Whitman Music (Account #11514), so the match can be deposited to benefit our program. The contact at Alliance for Education that can help you or your company match is Sanya Hussain at [Sanya@alliance4ed.org](mailto:Sanya@alliance4ed.org). For additional help, please contact our treasurer at [fowmtreasurerwms@gmail.com](mailto:fowmtreasurerwms@gmail.com).

Donate Today

---

Thank you volunteers!

Sending out a HUGE THANK YOU to the volunteers who helped with the project to spruce up the band room on Saturday, October 21. With your generous help, we accomplished much: assembled an instrument cabinet, touched-up the paint on the band mural and in the practice rooms, and helped better organize the music library. We appreciate your support for the music program and thank you for your time, effort, and talents!



## Current Volunteer Opportunities

Check out the [Whitman Music Volunteer Sign Up](#) to find ways to help out with upcoming performances in November and December.

We also have additional volunteer needs to call out - for each of these opportunities, contact [fowmvolunteercoordinator@gmail.com](mailto:fowmvolunteercoordinator@gmail.com) to learn more or if you are interested (or you know someone who is):

1. **Stage Lighting expertise:** Ms. Gunn has some ideas for special lighting for the Pops Concert in November and could use an assist if you have expertise.
2. **Drum Stick Cabinet:** To help organize our percussion section, we are seeking someone with woodworking skills to help us build a simple drumstick cabinet like the one pictured below
3. **YouTube Channel Content Poster:** willing to help us manage our YouTube Channel? You'd work closely with Ms. Gunn and the FOWM Board to post videos to show off our amazing student musicians.
4. **Help create forms for Ms. Gunn:** are you a word processing whiz? Ms. Gunn could use some help creating and formatting forms for our Instrument Coaches to fill out when they start working with our students.

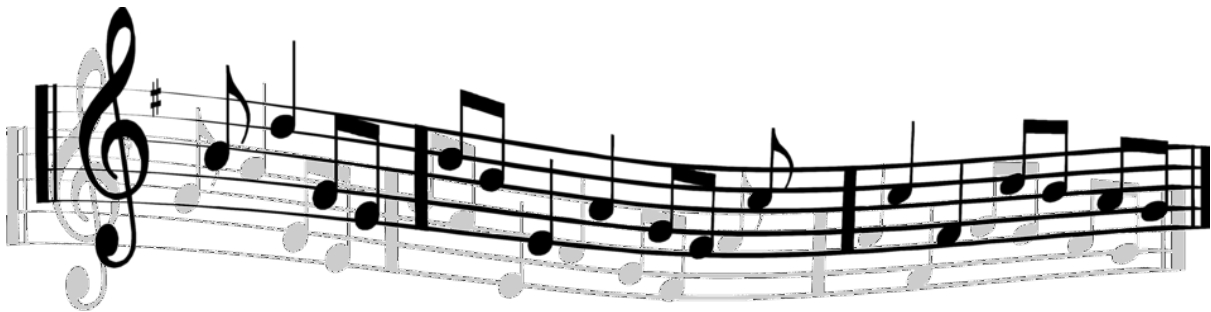




---

## New FOWM Website

Check out our [new website](#) that launched with the school year - it's another handy source for helpful information including a calendar of upcoming events, and information about ways to support the Whitman Middle School music programs and musicians. Bookmark or favorite it now in your browsers and mobile device so you have easy access to all the latest information.



---

## New FOWM Fundraising Lead

## Welcome, Lyla Ross!

We are excited to share that Lyla Ross has joined the FOWM team as our Fundraising Chair. Lyla's son is a 6th grader in Intermediate Band, and her daughter graduated Whitman Middle School last year.

In this role, Lyla will help to staff and oversee our fundraising endeavors and explore new fundraising opportunities for FOWM. She will work with the president and treasurer to make sure fundraising expectations are reasonable and appropriate for our group and that we are in alignment with the Whitman Music calendar. We're excited to welcome Lyla to our team and you'll hear more from her in the months ahead.

---

## Whitman Music Program Amazon Wishlist



Whitman music program has a wishlist on Amazon for families that shop there. Purchases will ship directly to Ms. Gunn at Whitman and help students succeed in their music practice!

[Whitman Music Wishlist](#)

---

[About the Friends of Whitman Music](#)

Friends of Whitman Music is a parent-run group that works closely with music staff and school administration to provide support to the Whitman Music program, both financially through fundraising efforts and with coordinating volunteer help throughout the school year.

We meet monthly to check in with Ms. Gunn and discuss opportunities for us to help with various activities and fundraising throughout the year. All are welcome to join at these meetings, which will be held typically once a month.

Email us with any questions [friendsofwhitmanmiddlemusic@gmail.com](mailto:friendsofwhitmanmiddlemusic@gmail.com).

**Donate to Whitman Music (Alliance4Ed acct #11514)**

#### 2023-24 FOWM Committee

Alexis Cruikshank, President

Jan Johnson, Treasurer

Jen Sullivan, Secretary

Lyla Ross, Fundraising Chair

Katie Sachter, Volunteer Coordinator

Todd Vician, Communications Lead

Kevin Emerson, Drumline Representative

Whitman Middle School Music Program Director/Teacher: Ms. Melanie Gunn [magunn@seattleschools.org](mailto:magunn@seattleschools.org)

Jazz Band Teacher: Audrey Stangland

**Follow the [Whitman Music Program on Instagram](#)**

[Visit the FOWM website](#)

---

*Copyright © 2023 Friends of Whitman Music, All rights reserved.*

Want to change how you receive these emails?

You can [update your preferences](#) or [unsubscribe from this list](#).

